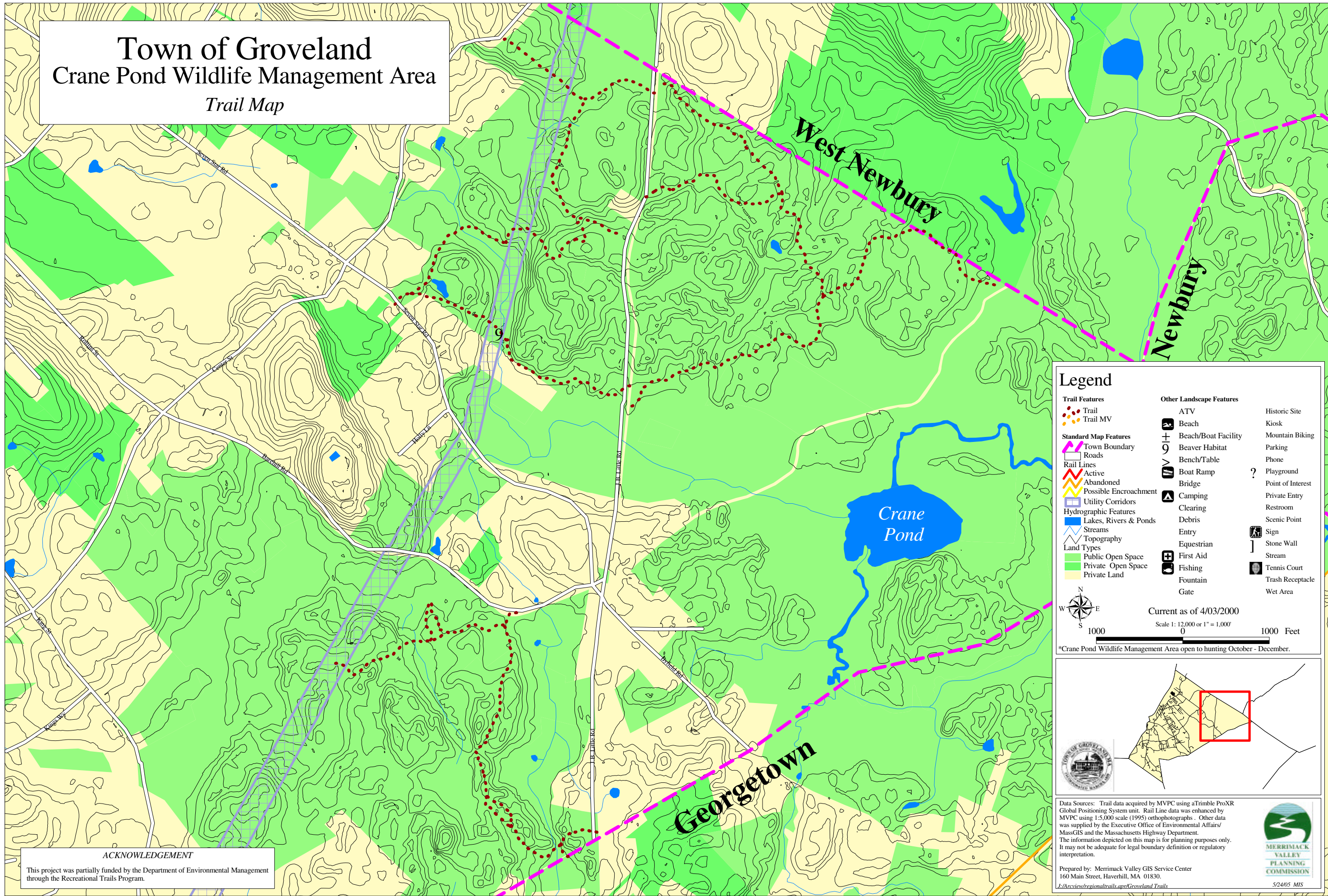


Town of Groveland Crane Pond Wildlife Management Area Trail Map

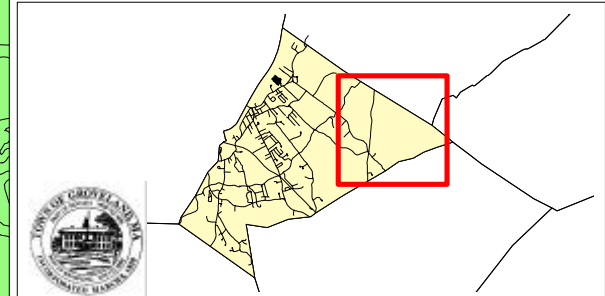


Legend

Trail Features	Other Landscape Features	
Trail	ATV	Historic Site
Trail MV	Beach	Kiosk
Standard Map Features	Beach/Boat Facility	Mountain Biking
Town Boundary	Beaver Habitat	Parking
Roads	Bench/Table	Phone
Rail Lines	Boat Ramp	? Playground
Active	Bridge	Point of Interest
Abandoned	Camping	Private Entry
Possible Encroachment	Clearing	Restroom
Utility Corridors	Debris	Scenic Point
Hydrographic Features	Entry	Sign
Lakes, Rivers & Ponds	Equestrian	Stone Wall
Streams	First Aid	Stream
Topography	Fishing	Tennis Court
Land Types	Fountain	Trash Receptacle
Public Open Space	Gate	Wet Area
Private Open Space		
Private Land		

N
 Scale 1: 12,000 or 1" = 1,000'
 0 1000 Feet
 Current as of 4/03/2000

*Crane Pond Wildlife Management Area open to hunting October - December.



Data Sources: Trail data acquired by MVPC using a Trimble ProXR Global Positioning System unit. Rail Line data was enhanced by MVPC using 1:5,000 scale (1995) orthophotographs. Other data was supplied by the Executive Office of Environmental Affairs/ MassGIS and the Massachusetts Highway Department. The information depicted on this map is for planning purposes only. It may not be adequate for legal boundary definition or regulatory interpretation.

Prepared by: Merrimack Valley GIS Service Center
160 Main Street, Haverhill, MA 01830.
L:\Arcview\regionaltrails.apr\Groveland Trails

5/24/05 MIS

ACKNOWLEDGEMENT
This project was partially funded by the Department of Environmental Management through the Recreational Trails Program.